



KFARM

Agriculture : The Next Future

[Consisting Show]

KFARM, SmartFarm Exhibition

KFARM, Agricultural Machinery and Materials Exhibition

KFARM, Smart Livestock Exhibition

KFARM, 6th Industrial Exhibition

KFARM, Rural Return and Resettlement Exhibition

KFARM SUWON MESSE

Nov. 14 (Fri) - **16** (Sun) **2025**

Host. 대한민국지방신문협의회
Korea Association of Regional Newspapers

Organizer.  MESSE ESANG

Sponsors.  농촌진흥청  KBIZ 중소기업중앙회  KASFI (사)한국스마트팜산업협회
Korea Association of Smart-Farm Industry  KAR 한국로봇산업협회
Korea Association of Robot Industry

Event Overview



Schedule for the Firts Half of 2025

Event	KFARM
Date	Nov. 14(Fri) - 16(Sun), 2025
Place	SUWON MESSE
Host	Korean Association of Regional Newspapers
Organizer	MESSE ESANG

International certification exhibition +



KFARM is an international certified exhibition+ accredited by the Association of Korean Exhibition Industries (AKEI).


Major Participating Buyers




Hosted by Korea's NO.1 exhibition company, Messe Esang


'MESSE ESANG' has a diverse portfolio as **NO.1 ORGANIZER** in Korea, Major Participating Buyer_82events in 18 sectors. We are the first organizer to integrate big data analysis with exhibition planning and strategy in Korea, and also designated as the 'Data Voucher Project' by the 'Korea Data Agency'.


82nd
EXHIBITON


846,888m²
AREA

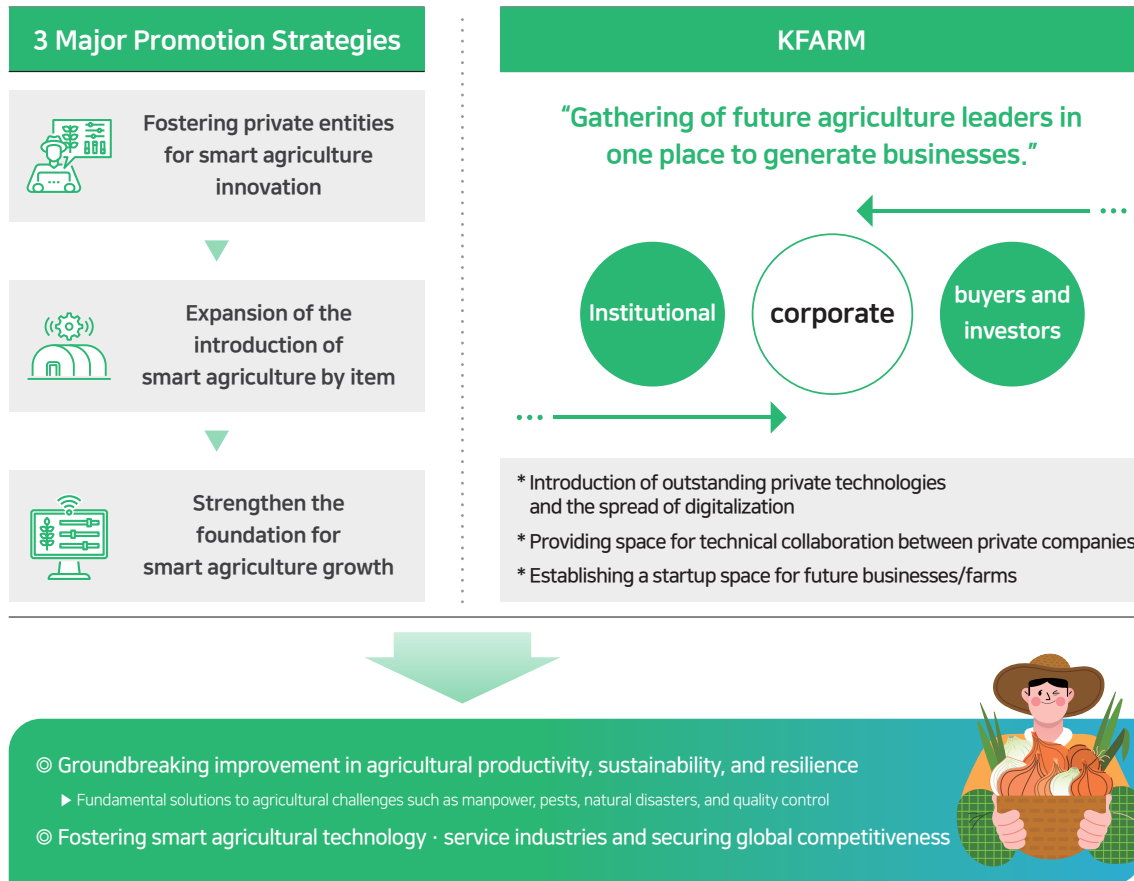

9,488 +
EXHIBITOR


1,492,240 +
BUYER


26,074 +
BOOTH



KFARM 2025



FarmTech
Forum

AgTech
Planning Center

Agricultural Machinery
and Materials Exhibition

Smart Farm
Exhibition



Smart Farm Exhibition

Agriculture is growing more advanced, and the combination of technology and agriculture is leading to the rapid development of the agricultural environment. Many farms have already started using smart farms, and technologies suited for each cultivation environment are continuing to be researched.

The K-FARM Smart Farm Exhibiton is a business space that creates an environment that for agriculture applications by introducing future agriculture, smart farm and smart factory, urban agriculture, and technology innovating the agricultural environment.

Category



Future Agriculture (Smart Farm)

Growth Environment Integrated Control System, Growth Information DB analysis system, Maintenance Solution, Automatic Control Solution, etc.



Smart Factory Facilities and Devices

Farm automation machinery/material/parts, Plant Factory, Smart Greenhouse, Internal/external Environment Management Equipment



Urban Agriculture

Functional Vegetable Garden, Hobby Farming, Weekend Farm, Home Plant Cultivation Machine, Cultivation System, Hydroponic System





Agriculture Machinery & Equipment Exhibition

If agriculture has been developing around the labor force until now, it will develop according with cutting-edge technology in the future, and Korean companies securing technology for future agricultural machinery and agricultural materials will provide the pump for industrial development. K-FARM introduces a Korean-style future agricultural work model and a vision for Korean agriculture centered around the establishment of basic infrastructure, automation through the combination of agriculture and robot technology, unmanned technology, revitalization of advanced agricultural machinery production.

Category



Cultivating and Grounding Machines

Agricultural Tractor, Cultivator, Farm Master, Rice Paddy Machine, agricultural excavator, etc.



Harvesting Machines

Grain transporters, Agricultural Harvesters, Farm Power Transporting Vehicle, Combine Harvester Threshing Machine, Trailers, etc.



Rice transplanting/planting/seeding machine

Power planter, Power seeder, Rice Planter, Rice-plating Machine, Seedling Box, etc.



Parts and others

Agricultural ladders, Rotary Blades, Hydraulic Cylinders, Safety Lights (Warning Lights), Agricultural Machinery Parts, etc.

Smart Livestock Exhibition

The livestock industry is a high value-added industry based on the distribution and processing industry and plays an important role in the economic sector. The livestock industry is a high value-added industry based on the distribution and processing industry and plays an important role in the economic sector. Korea's livestock production is more than 25 trillion won, accounting for about 40% of the total agricultural production, of which Gyeonggi-do Province ranks first in the country with 19.2%. In addition, Gyeonggi Province announced a plan to invest 42.7 billion won to build a future livestock system based on science and technology using information and communication technology in response to livestock industry tasks such as revitalizing the rural economy, sustainable resource circulation agriculture and strengthening food security. Under this trend, KFARM seeks ways to increase livestock farm income and lays the groundwork for future livestock environment systems.

Category



Livestock Equipment

Livestock Equipment and Facilities,
Livestock Product Sanitation and Processing Facilities, etc.



Fodder

Mixed Feed Equipment and Products,
Feed Additives, Nutritional Supplements, etc.



Pharmaceutical Sector

Animal Medicine, Disease Prescription,
Hygiene and Quarantine, etc.



Longitudinal Contraction Sector

Variety, Breeding Improvement, Biotechnology, etc.



Production Sector

Production Technology, Farm Management,
Consulting, Farm HACCP, etc.



Information Sector

Livestock-Related Publications, Information,
Distribution and Computer Management Systems, etc.





6th Industrial Exhibition

The 6th industry is a convergence of primary, secondary, and tertiary industries. It is a new industry that generates high-added value by processing high-value-added products using agricultural products and expanding into service industries such as experience programs using local resources. The government has set the goal of creating jobs and added value in rural areas through the 6th industrialization. It is promoting projects to support the diversification of management by producers such as farmers and businesses in agri-food processing and distribution rural tourism. KFARM introduces everything in the 6th industry, including the latest agricultural products processing, packaging technology, logistics system-related products and technologies, and best practices.

Category

Packaging

Packaging Machinery, Packaging Materials, Machine Parts, Packaging Materials, Agricultural Products Containers, etc.



Distribution/Logistics

Standardization of Agricultural products, Distribution and Logistics system post-harvest management and other processing facilities, Storage Facilities, Wholesale and Commodity Broker, etc.



Agricultural Products, Agricultural Food

Agricultural Processed Products, Agricultural Specialties, Eco-friendly Organic Food and Products, 6th Industry Food, Functional Food, Traditional Food, etc.

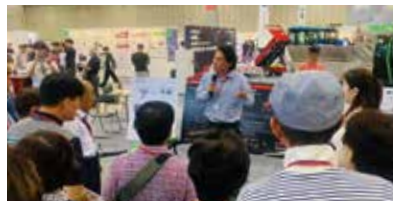


2025 FARM-TECH FORUM

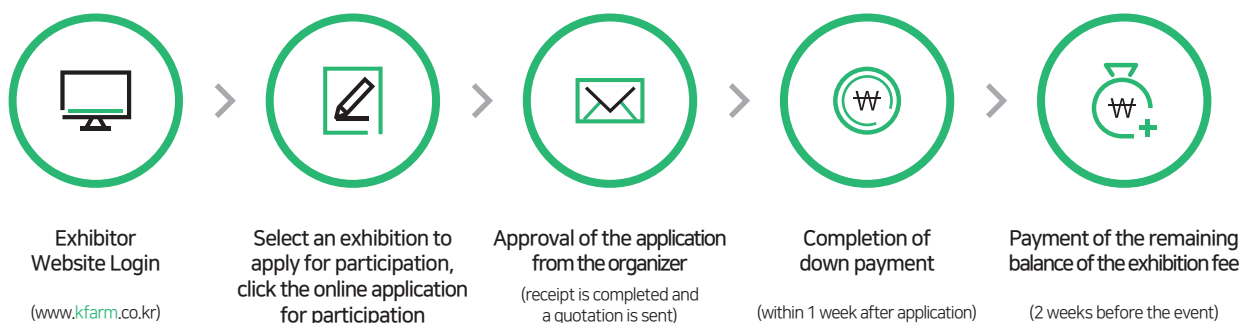
FARM-TECH FORUM provides a meeting place with top experts in the agricultural and fisheries industries and related food and technology fields, and provides the latest industry trends. It provides an opportunity to understand and come up with new business ideas. This year, We are holding a forum on this topic. Government, universities, companies and industries are discussing how the agriculture and fisheries industries are changing with tech companies. You can hear vivid opinions from experts and executives. In the rapidly becoming more advanced after the coronavirus pandemic, We hope you gain the know-how to succeed in the Food Tech and AgTech industries



2025 KFARM Highlights



How to Participate and Booth Information



· Account : IBK 541-036-291-01-110 / MEESE ESANG

· The participation fee should be deposited in the name of the company, but please notify the secretariat in case the deposit was made in the name of an individual. In principle, the tax invoice will be issued in the preceding month of the month of event after the deposit is completed, unless otherwise requested.

· The participation fee is non-refundable, and cancellation of participation will be handled according to the regulations of the secretariat.

· Cancellation of participation due to personal circumstances of the participant is possible only with the approval of the person in charge of the organizer, and at the time of cancellation, the following cancellation fee will be incurred.

Guide for Booth Types

* VAT(10%) not included

Space Only		Artwall	
Size	3m X 3m	Size	3m X 3m
Price	USD 2,200	Price	USD 2,600
Details	<ul style="list-style-type: none"> - Exhibition space only - Booth design and construction are in exhibitor's responsibility - A minimum of 2 booths(18m²) must be ordered 	Details	<ul style="list-style-type: none"> - Exhibition space - Carpet: 9m² - Side wall - Banner - Electricity: 1kW (with 2 sockets) - Information Desk & Chair : 1set per exhibitor

NEXT KFARM

Nov, 2025

SUWON MESSE



**Smart Farm
Exhibition**



**Agriculture Machinery
& Equipment Exhibition**



**Smart Livestock
Exhibition**



**6th Industrial
Exhibition**



**Rural Return
& Resettlement Exhibition**



KFARM is an exhibition to help companies grow in line with the trends and needs of the times, such as digitalization and carbon neutrality, and to enhance the understanding of the people.

It will be reborn as a key window for general agricultural growth, securing global competitiveness, forming public consensus, and disseminating government policies.

KFARM Secretariat

Host **Korean Association of Regional Newspapers**

Office 22, Huseok-ro 462beon-gil, Chuncheon-si, Gangwon-do, Republic of Korea 24232

Organizer **MESSE ESANG**

Office 9, World Cup buk-ro 58-gil, Mapo-gu, Seoul, Republic of Korea 03922